

Western Sydney Primary Health Network

Progressing Health Now

phn
WESTERN SYDNEY
An Australian Government Initiative



Australian Government

Progressing health now

Building a Primary Health Network in Western Sydney

Since 2002 WentWest has been part of the western Sydney community, delivering support and education to primary care and working with key partners to progress the region's health system.

From 1st July 2015, WentWest took on the role of Western Sydney Primary Health Network, this new era will see WentWest continue to work with its partners to deliver better health outcomes for the region.

Vision

Healthier communities, empowered individuals, sustainable primary health care workforce and system.

Mission

Leading integrated and coordinated health care towards better health, equity and empowerment for western Sydney communities and the health professionals who care for them.

Values

Creativity – Challenge

Leadership – Inspire Action

Equity – Actively Overcome

Excellence – Be the Best

Respect – Understand Others

WentWest's Operating Principles

- ▶ WentWest supports the provision of person centred, integrated and coordinated care, reflecting Medical Home Principles.
- ▶ WentWest strengthens quality, scope, connectedness and capability in general practice and primary health care;
- ▶ WentWest promotes innovation, integration and continuous improvement to increase quality, safety and equity in all health care
- ▶ WentWest enhances health literacy and self care capabilities for individuals, families and communities
- ▶ WentWest leads the design of locally responsive and equitable services by working with local communities to build on what already exists
- ▶ WentWest works across sectors to influence socio-economic determination of health
- ▶ WentWest integrates teaching and research into health service planning, delivery and evaluation.

Primary Health Networks – Role and Responsibility

Primary Health Networks (PHNs) are a federal government health initiative, established with the key objectives of increasing the efficiency and effectiveness of health services for patients, particularly those at risk of poor health outcomes and improving coordination of care to ensure patients receive the right care in the right place, at the right time.

In its role as the Western Sydney Primary Health Network, WentWest will focus on addressing national and regional health priorities in consultation and partnership with local GPs, Allied Health Professionals, consumers and community bodies and the broader health sector.

WentWest's intended focus as a PHN and how it will consult across the community is outlined throughout this brochure.



Addressing Health Priorities

In its role as the Western Sydney Primary Health Network, WentWest will be focused on both regional and national health challenges. Together with health professionals, partners from both the health and hospital sector, consumers and the broader community, WentWest will seek to identify gaps and commission solutions in the areas of:

- › **Population Health**
- › **Chronic Disease**
- › **Aboriginal Health**
- › **Mental Health**
- › **Child & Family**
- › **Aged Care**

Underpinning these priorities are four health enablers:

- › **eHealth**
- › **Workforce Planning & Development**
- › **Clinical Pathways**
- › **Principles of the Patient Centred Medical Home**

WentWest's Focus

WentWest is committed to working in partnership across the sector to fulfil its strategic objectives, which seek to progress and achieve:

- › Consumer centric values and equity
- › Strategies for innovation and outcomes
- › Support and engagement of General Practice and Primary Care
- › Leveraging from partnerships
- › Investment in system enablers & scalable infrastructure
- › Organisational excellence
- › Thought leadership

Committed to better health outcomes

A key feature of the Western Sydney Primary Health Network will be its ongoing and in depth consultations with local health professionals and the broader community around the identified areas of priority. To support this role, WentWest has established two consultative bodies with a broad range of representatives from across the region.

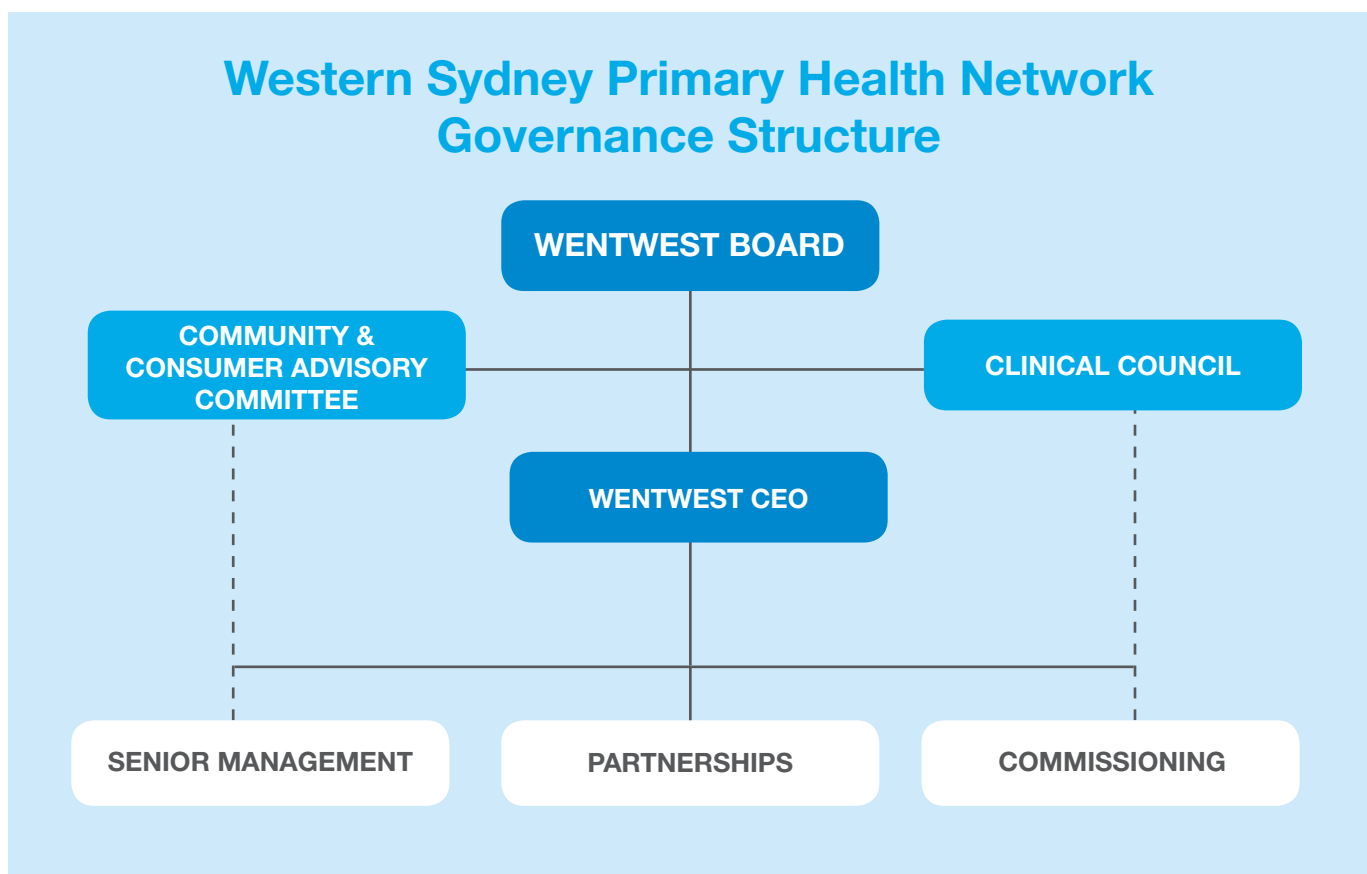
Clinical Council

WentWest has established a Clinical Council to inform the Board and Management of WentWest on opportunities to improve medical and health care services in the region. The Clinical Council will also

champion and inform the creation of locally relevant clinical pathways that are aligned with national priorities and that improve quality, costs-effectiveness and timeliness of patient care and reduce avoidable hospitalisations.

Community & Consumer Advisory Committee

WentWest has established a Community & Consumer Advisory Committee to provide advice to the Board and Management on matters and issues affecting primary health care consumers. Its purpose is to bring the consumer voice to PHN activities, and to assist WentWest in working towards a patient centred system of primary health care that delivers better health outcomes.



More information

To find out more about WentWest's role as the Western Sydney Primary Health Network, visit www.wentwest.com.au, email phn@wentwest.com.au or contact (02) 8811 7100.

WentWest acknowledges the traditional custodians of the land we walk upon today, and respect their continuing culture and the contribution they make to the life of this city and surrounding region.

Level 1, 85 Flushcombe Road, Blacktown NSW 2148
PO Box 5, Blacktown Post Shop NSW 2148
T: (02) 8811 7100 | F: (02) 9622 3448
E: wentwest@wentwest.com.au | [@WentWest_Ltd](https://www.facebook.com/WentWest_Ltd)
www.wentwest.com.au

ACN 099 255 103
ABN 80 099 255 106

